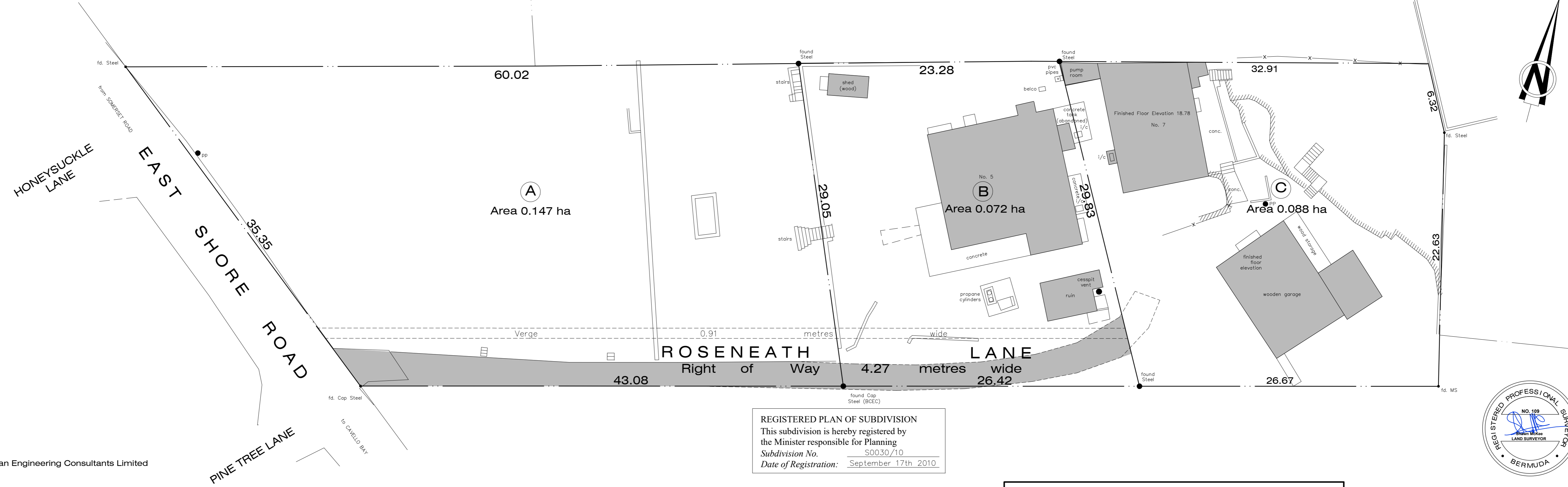
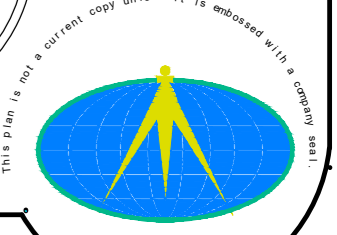
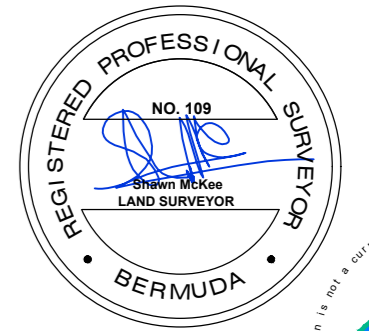


METRIC



NOTES:
 BCEC Bermuda-Caribbean Engineering Consultants Limited
 i/c Inspection Cover
 conc. Concrete

REGISTERED PLAN OF SUBDIVISION
 This subdivision is hereby registered by
 the Minister responsible for Planning
 Subdivision No. S0030/10
 Date of Registration: September 17th 2010



PLAN OF SURVEY
 LOTS A AND B, No. 5 ROSENEATH LANE, SANDYS PARISH, BERMUDA

DRAWING No. SV 16169 / 1A / 4
 DATE: 24th September 2023
 SCALE :- 1 : 200
 DRAWN BY : SMc