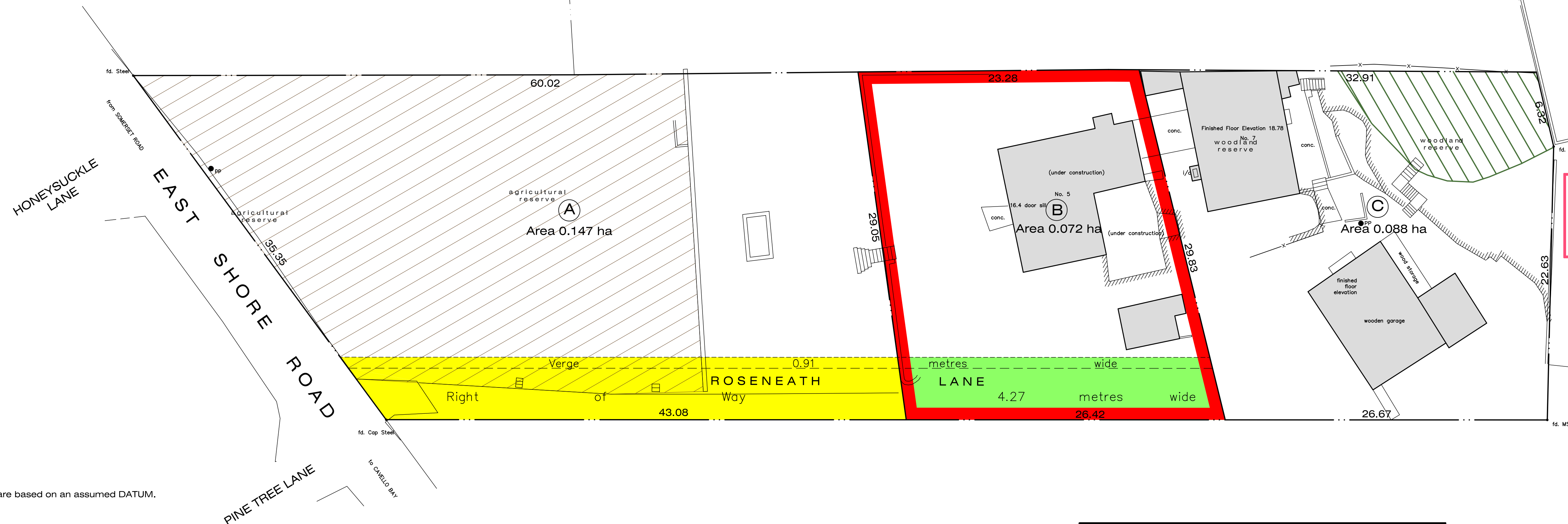


METRIC



REGISTERED PLAN OF SUBDIVISION
 This subdivision is hereby registered
 by the Minister responsible for Planning
 Subdivision No. S.0030/10
 Date of Registration SEP. 17, 2010

RECEIVED
 JUL 27 2010
 DEPARTMENT OF PLANNING
 FILE

APPROVED
 FINAL PLAN OF SUBDIVISION
 AUG 20 2010
 DEVELOPMENT APPLICATIONS BOARD

- NOTES:**
- Elevations shown hereon are based on an assumed DATUM.
 - pp Power Pole
 - i/c Inspection Cover
 - conc. Concrete
 - Rock Cut
 - Limit of Bush

PLAN OF SURVEY
 No. 5 ROSENEATH LANE, SANDYS PARISH, BERMUDA

DRAWING No. SV 13693 / 3 / 4
 DATE: 15 JUNE 2010
 SCALE :- 1 : 200
 DRAWN BY : SM

